

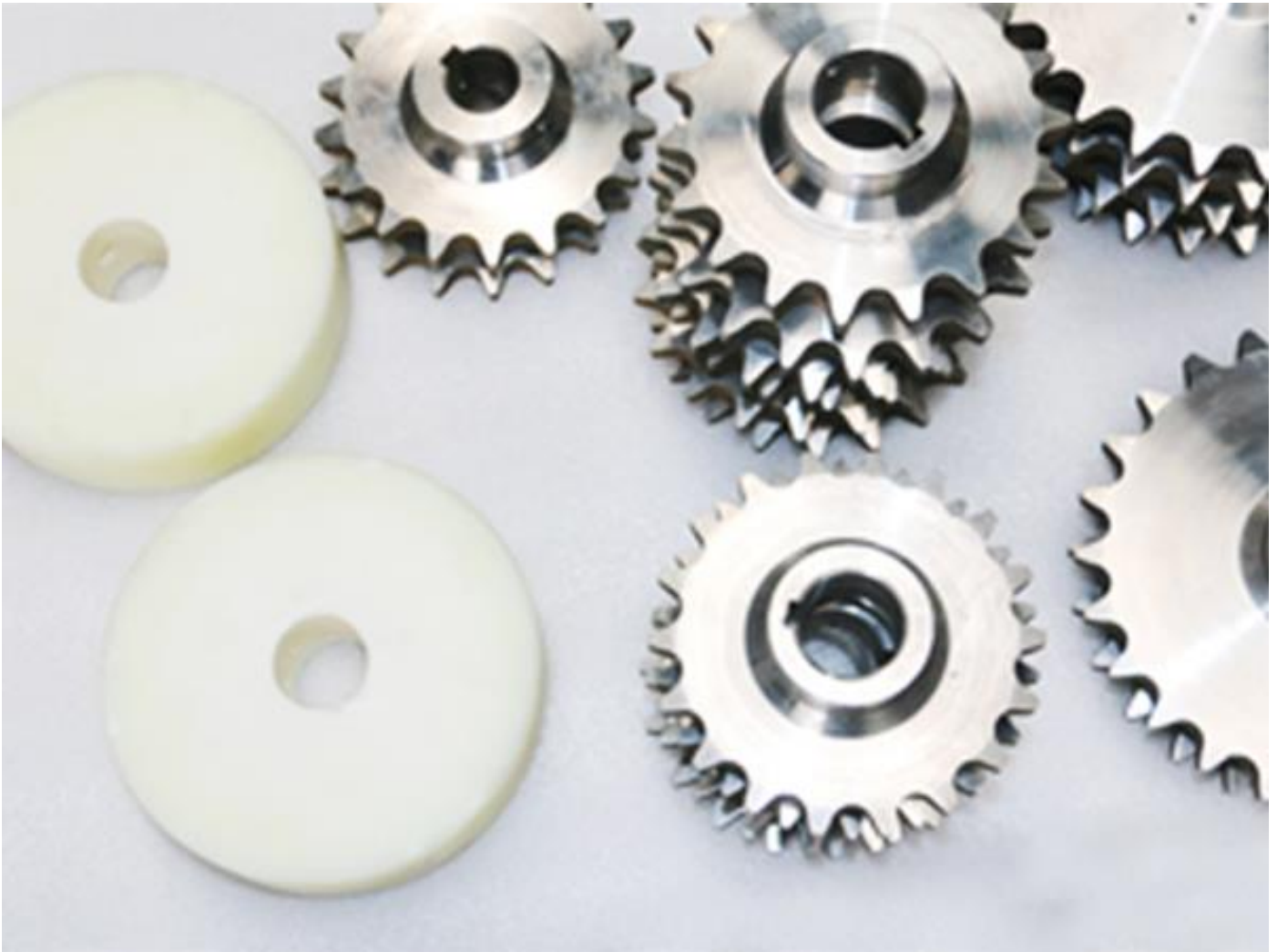
Specialize In Wire Conveyor Belt Manufacturing And Solution.



## Sprockets

Specialize In Wire Conveyor Belt Manufacturing And Solution.

## Overview



When choosing the most appropriate sprocket material for your application, it is important to look at the conditions under which the belt will operate. Conditions such as abrasion, corrosion, high/low temperature variations, the surrounding temperature, type of process performed, etc. all have an impact on sprocket selection.

PFM Screen offers a comprehensive range of standard sprockets and can also manufacture to order sprockets for new or replacement applications to suit any specified belt.





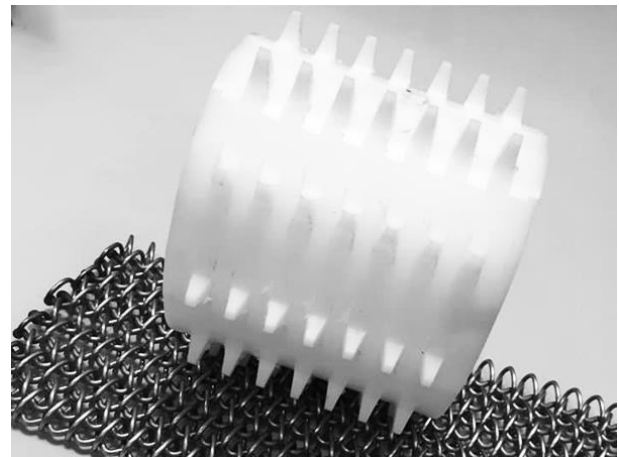
## Specialize In Wire Conveyor Belt Manufacturing And Solution.

The sprockets are tailor-made, depending on pitch, roller diameters, roller widths and number of teeth. The sprockets can be provided with a bore, a key-way and a threaded hole for a screw, all made to size.

Materials for full material driving wheels:

Nylon and Stainless Steel AISI 304, Cast Iron, Steel, Stainless Steel AISI 316, several synthetic materials.

## Sprockets Types

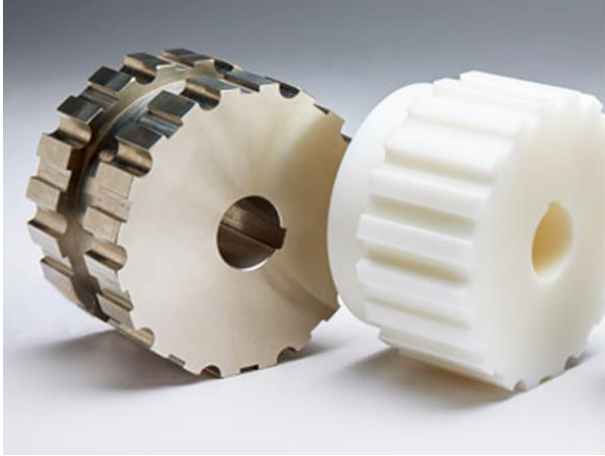


Sprocket for Balanced Spiral Weave Conveyor Belts



Sprocket for Flat Flex Conveyor Belt

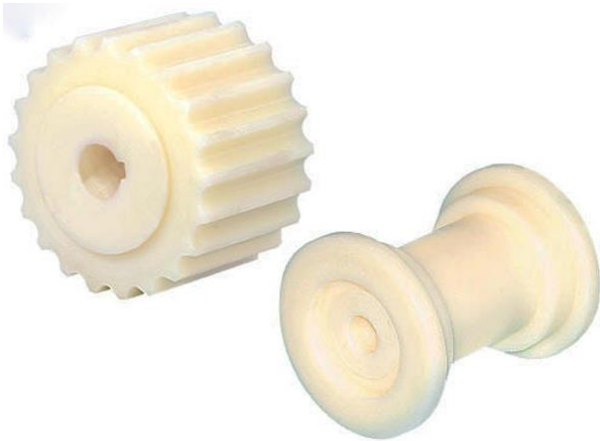
Specialize In Wire Conveyor Belt Manufacturing And Solution.



Sprocket for Eye Link Conveyor Belt



Sprocket for Honeycomb Conveyor Belt



Sprocket for Plate Link Conveyor Belt



Sprocket for Ladder Conveyor Belt



Sprocket for chain links



Please contact us to get sprockets that match your conveyor belt.

Specialize In Wire Conveyor Belt Manufacturing And Solution.

## Material Availability

Available material types include:

- Nylon (PA6) - FDA approved
- Stainless Steel - Corrosive environments
- Mild Steel
- Cast Iron
- Other materials are available on request.

## Specifications

| Specifications of the Sprocket for Flat Flex Conveyor Belt |                    |                  |           |                     |                 |
|--|--------------------|------------------|-----------|---------------------|-----------------|
| Belt Specification   |                    | Sprocket Details |           |                     |                 |
| Pitch  | Wire Diameter      | Outside Dia.     | Root Dia. | Bore Dia.           | Number of Teeth |
| 4.24 mm  | 0.9 mm             | 50.80 mm         | 46.99 mm  | 19.05 mm            | 34              |
| 4.30 mm  | 1.00 mm            |                  |           |                     |                 |
| 4.30 mm  | 1.27 mm            |                  |           |                     |                 |
| 5.64 mm  | 0.9 mm             | 50.80 mm         | 45.72 mm  | 19.05 mm            | 25              |
|  | 1.00 mm            | 76.20 mm         | 70.00 mm  | 19.05 mm<br>25.4 mm | 39              |
| 6.35 mm  | 0.9 mm             | 50.80 mm         | 44.19 mm  | 19.05 mm            | 22              |
|  | 1.00 mm            | 76.20 mm         | 71.12 mm  | 19.05 mm            | 35              |
|  | 1.27 mm            |                  |           | 25.4 mm             |                 |
| 7.26 mm  | 1.27 mm<br>1.6 mm  | 31.75 mm         | 27.43 mm  | 15.87 mm            | 12              |
|  |                    | 50.80 mm         | 45.72 mm  | 19.05 mm<br>25.4 mm | 20              |
|  |                    | 57.15 mm         | 50.80 mm  | 19.05 mm            | 22              |
|  |                    | 76.20 mm         | 68.58 mm  | 19.05 mm<br>25.4 mm | 29              |
| 11.30 mm   | 1.27 mm            | 76.20 mm         | 70.86 mm  | 25.4 mm             | 19              |
| 12.70 mm   | 1.83 mm<br>2.35 mm | 50.80 mm         | 44.95 mm  | 19.05 mm            | 11              |
|  |                    |                  |           | 25.4 mm             |                 |
|  |                    | 76.20 mm         | 68.58 mm  | 19.05 mm<br>25.4 mm | 17              |
| 20.32 mm   | 2.35 mm            | 76.20 mm         | 65.53 mm  | 19.05 mm            | 10              |
|  |                    |                  |           | 25.4 mm             |                 |

NOTE: Custom specification is available if you can't find the suitable parameters.





# PFM SCREEN

Specialize In Wire Conveyor Belt Manufacturing And Solution.

### Specifications of the Sprocket for Eye Link Conveyor Belt

| Number of Teeth | Belt Pitch (mm) |       |       |       |       |       |       |       |       |       |       |
|-----------------|-----------------|-------|-------|-------|-------|-------|-------|-------|-------|-------|-------|
|                 | 15.875          | 25    | 25.4  | 30    | 31.75 | 50    | 50.8  | 60    | 70    | 75    | 100   |
| 7               | 36.6            | 57.6  | 58.5  | 69.1  | 73.2  | 115.2 | 117.1 | 138.3 | 161.3 | 172.9 | 230.5 |
| 10              | 51.4            | 80.9  | 82.2  | 97.1  | 102.8 | 161.8 | 164.4 | 194.2 | 226.5 | 242.7 | 323.6 |
| 12              | 61.3            | 96.6  | 98.1  | 115.9 | 122.7 | 193.2 | 196.3 | 231.8 | 270.5 | 289.8 | 386.4 |
| 14              | 71.3            | 112.4 | 114.2 | 134.8 | 142.7 | 224.7 | 228.3 | 269.6 | 314.6 | 337.1 | 449.4 |
| 15              | 76.4            | 120.2 | 122.2 | 144.3 | 152.4 | 240.5 | 244.3 | 288.6 | 336.7 | 360.7 | 481   |
| 16              | 81.4            | 128.2 | 130.2 | 153.8 | 162.7 | 256.3 | 260.4 | 307.6 | 358.8 | 384.4 | 512.6 |
| 18              | 91.4            | 144   | 146.3 | 172.8 | 182.8 | 287.9 | 292.6 | 345.5 | 403.1 | 431.9 | 575.9 |
| 20              | 101.5           | 159.8 | 162.4 | 191.8 | 203   | 319.6 | 324.7 | 383.6 | 447.5 | 479.4 |       |

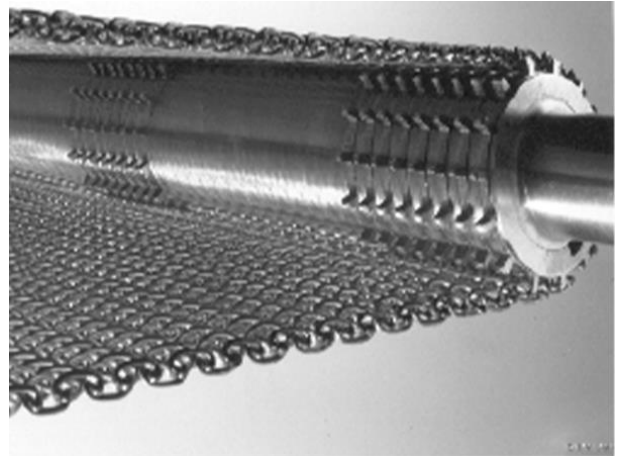
NOTE: Custom specification is available if you can't find the suitable parameters.

### Pitch circle diameters of the Sprocket for Honeycomb Conveyor Belt

| Number of Teeth | Belt Cross Rod Pitch |            |            |            |            |            |            |            |           |           |          |
|-----------------|----------------------|------------|------------|------------|------------|------------|------------|------------|-----------|-----------|----------|
|                 | 12.85 (mm)           | 13.72 (mm) | 14.22 (mm) | 28.58 (mm) | 27.53 (mm) | 26.97 (mm) | 26.97 (mm) | 28.58 (mm) | 38.1 (mm) | 50.8 (mm) | 6.2 (mm) |
| 12              |                      |            | 53.98      | 109.42     | 105.41     | 103.23     | 103.23     | 109.42     | 146.22    | 195.3     | 293.45   |
| 16              | 64.58                | 69         | 71.61      |            |            |            |            |            |           |           |          |
| 18              | 72.39                | 77.52      | 80.72      | 163.09     | 157.1      | 153.87     | 153.87     | 163.09     | 217.96    | 291.08    | 437.36   |
| 24              | 96.34                | 103.12     | 107.39     | 216.97     | 209        | 204.7      | 204.7      | 216.97     | 289.94    | 387.22    | 581.81   |
| 34              |                      |            |            | 306.93     |            |            |            |            |           |           |          |
| 36              | 144.25               | 154.46     | 161.65     | 324.94     |            |            | 306.58     |            |           |           |          |

Specialize In Wire Conveyor Belt Manufacturing And Solution.

## Applications



Sprocket for Balanced Spiral Weave Conveyor Belts



Sprocket for Flat Flex Conveyor Belt



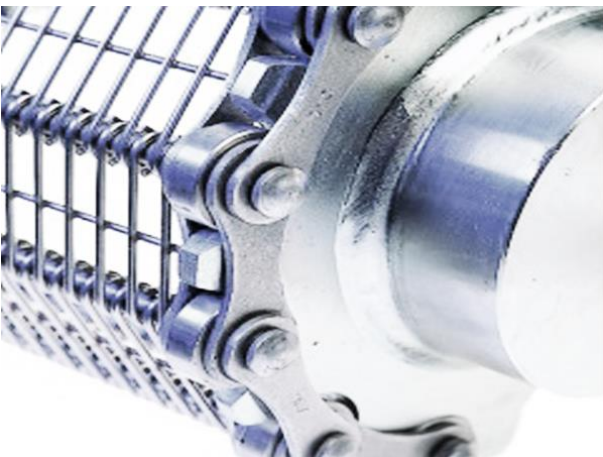
Specialize In Wire Conveyor Belt Manufacturing And Solution.



Sprocket for Honeycomb Conveyor Belt



Sprocket for Plate Link Conveyor Belt



Sprocket for chain links



Sprocket for Ladder Conveyor Belt



Specialize In Wire Conveyor Belt Manufacturing And Solution.

## METAL CONVEYOR BELTS



Balanced Woven Conveyor Belts



Compound Weave Conveyor Belts



Chain Link Conveyor Belts



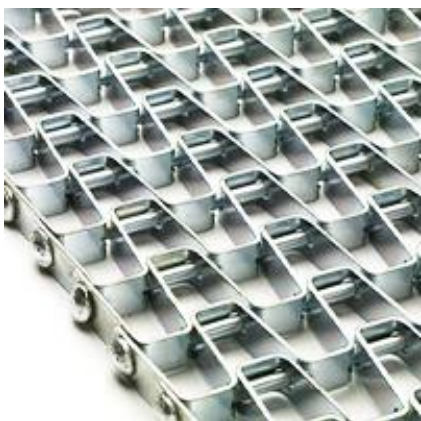
Flexible Rod Conveyor Belts



Flat Flex Conveyor Belts



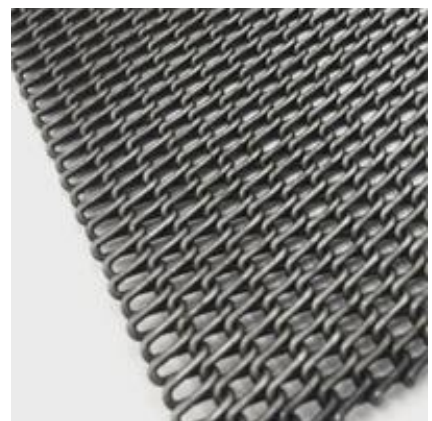
Eye Link Conveyor Belts



Honeycomb Conveyor Belts



Plate Link Conveyor Belts



Biscuit Baking Belts



# PFM SCREEN

Specialize In Wire Conveyor Belt Manufacturing And Solution.



Ladder Conveyor Belts

## CONVEYOR BELT ACCESSORY



Sprockets



Chain links

Our policy is one of continuous improvement and we reserve the right to change specifications at any time and without notice or modify these to suit manufacturing processes

**Add:** No.1107, Floor 11, Dazhong Plaza, Yinhe Road, Guangyang District, Langfang, Hebei, China 065000

**Factory Add:** Industrial Park Zone of South Anping County, Hebei Province, China 053600

**Tel:** +86-2188808

**Mobile:** +86-15369679157

**E-mail:** [info@pfmscreen.com](mailto:info@pfmscreen.com)

**Website:** [www.industrialconveyorbelt.com](http://www.industrialconveyorbelt.com)